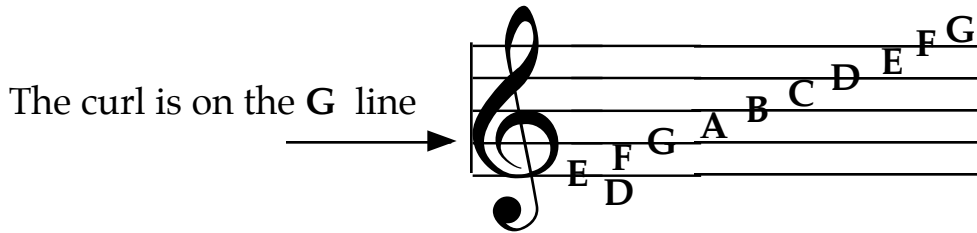


Lines and spaces of the G Clef (treble clef)

Going up the staff, all the names of the lines and spaces go forward in the musical alphabet. Going down, they go backwards.



Tips for remembering names of lines and spaces.

1. Remember that the first line of the G clef is E. Fill the rest of the notes going up in alphabetical order. Make sure you write the **line notes on the lines**, and the **space notes on the spaces**.
2. Another way to remember is to use your lines and spaces acronyms. I use

Fudge	for the lines and	E	for the spaces.
Deserves		C	
Boy		A	
Good		F	
Every			